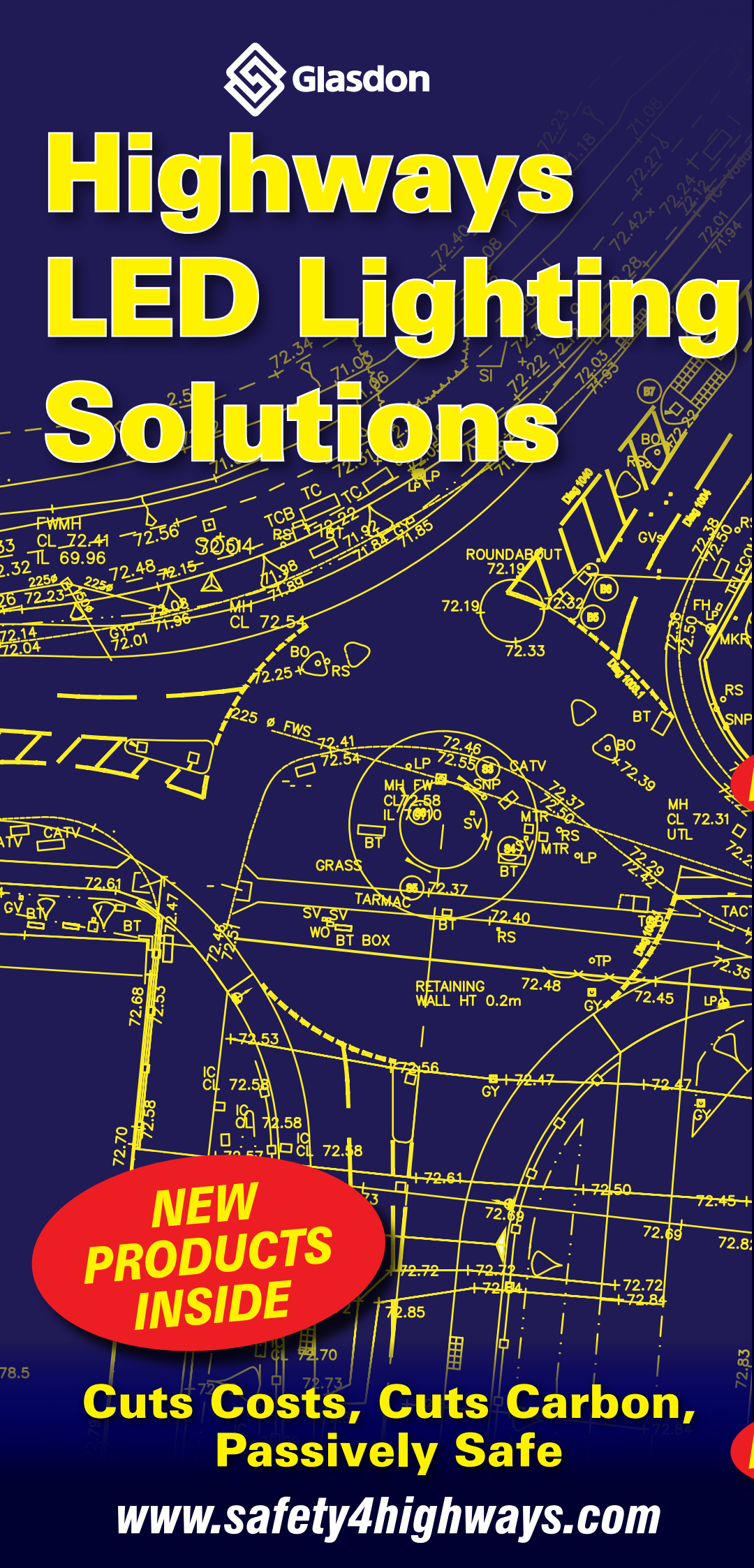


Highways LED Lighting Solutions



NEW



NEW

**NEW
PRODUCTS
INSIDE**

**Cuts Costs, Cuts Carbon,
Passively Safe**

www.safety4highways.com

Rebound Signmaster™

Bollard Range

Rebound Signmaster is the result of years of research and development by the Glasdon Group's dedicated team of product design specialists. The Glasdon Group has over fifty years' experience in the manufacture of high quality street furniture, and has been producing impact-absorbing road side safety products since the 1960's.

Rebound Signmaster bollard is available either illuminated or non-illuminated to meet any scheme requirement.

Non-illuminated

Exceptional reflectorisation whilst eliminating electricity costs.

Ideal for locations where no illumination is required (see page 4-5).

- 1) **Socketed** - ideal for quick bollard replacement.
- 2) **Surface mounted** - minimise installation costs - 4 fixing options available.

Illuminated

A range of LED illuminated options available.

1) For new installations

- i. **Signmaster Sublite™ LED** - light box installation, includes light box chamber to house a cut out and offers flexible ducting options. Will significantly reduce energy costs (see page 6-7).
- ii. **Signmaster LED 24V Flush Installation Kit** - designed without a light box for quick installation (see page 8).

2) For existing installations/light boxes

- i. **Signmaster Conversion Kits** - utilise your existing light box, whilst upgrading to state of the art LED illumination and a high performance rebound bollard (see page 9).
- ii. **Gear Tray only** - the most cost effective option. Upgrade to LED illumination, whilst utilising your existing light box and bollard (see page 9).

Compared to traditional lamps, an average of 80% saving on electricity costs can be made by switching to Rebound Signmaster LED Lighting.

Advantages

- ✓ **Passively Safe**
- ✓ **Cuts Energy / Cuts Cost**
- ✓ **Cuts Maintenance**
- ✓ **Fully Reflectorised**
- ✓ **Compatible with Telemetry Equipment**



White Rebound Signmaster Sublite Bollard.



White Rebound Signmaster, Non-Illuminated, Socketed Bollard.



White Rebound Signmaster Bollard with LED Gear Tray and Conversion Kit.

Design Features

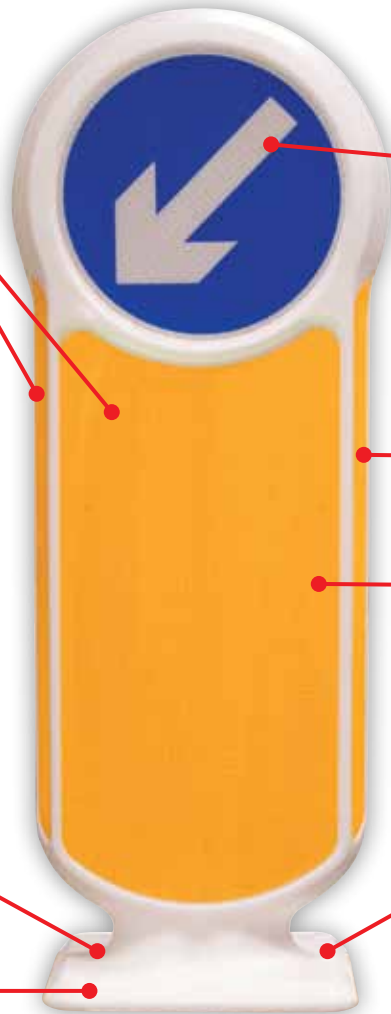
360 Degree Reflectivity – Provides excellent all-round visibility making it ideal for use at junctions.

Made from Impactapol® Material - Double-skinned to ensure exceptional strength and durability.

Drive Through Performance Proven at TRL – (Bollard meets BS EN 12767 NE4) Rebound Signmaster, Rebound Signmaster Sublite and 24V Flush Installation Kit have proven drive through performance at 100Km/h (62mph).

Versatile Fixing Options – An extensive range of fixing options are available.

Smooth Finish – Easy to clean.



300mm Sign Face – Large retroreflective sign face helps increase safety.

Retroreflective – Highly visible by day and by night. Reflectors have a warranted life of 10 years.

Visibility – Side patches have class leading size and are angled for a wider side view.

Recessed Panels – Tamper, vandal and weather resistant.

Uniformity – Helps to create a co-ordinated street scene. Non-illuminated and illuminated options.

Anti-Twist Design – One piece bollard with integral fixing points.

Rebound Signmaster
Surface Mounting

Passively Safe To help save a life

Out performs traditional illuminated bollards.



Passively Safe to
BS EN 12767
100
NE4

Rebound Signmaster Bollard, Rebound Signmaster Sublite and 24V Flush Installation Kit have been tested by TRL Ltd and passed to Performance Standard NE4/100Km/h under BS EN 12767:2007. (Passive safety of support structures for road equipment).

Manufactured in passively safe Impactapol material, to help prevent or reduce the severity of personal injury, in the event of vehicle impact. If impacted or run-through, Rebound Signmaster will self-return to an upright position, ensuring the hazard remains clearly marked, thereby saving on replacement and reinstatement cost.



Rebound Signmaster™ Non-Illum

Non-illuminated Rebound Signmaster is ideal for locations where no illumination is required. This illuminated and non-illuminated bollards are required. The retroreflective patches and signface

NEW Socketed

PASSED
at 100 Km/h
(62mph)

Design Features

Quick and Easy Bollard Replacement

Outstanding Rebound Performance

Moulded Round Stem – Gives excellent drive-through performance from all angles.

Small Footprint – Ideal for smaller traffic islands.

Socket Manufactured From Durapol Polymer – A proven corrosion-resistant and impact-resistant material.

Keyed Quick Release Mechanism

– Allows replacement bollard to be installed in seconds.

Durapol® Material Socket Plug

– Allows for easy replacement if a bollard is damaged, secures the bollard into the socket and prevents debris entering the socket.

Anchor Peg

– Secures bollard inside the socket, and creates an anti-twist design.

Concrete Shelves – Allows concrete to flow over the shelves on the socket offering anchorage.

Flat Based Socket – For ease of installation.



Model Specs available on request

Rebound Signmaster Socketed



White Rebound Signmaster, Non-Illuminated, Socketed Bollard.



White Rebound Signmaster, Non-Illuminated, Socketed Bollard.

Inated Bollard



allows for a consistent bollard installation throughout your traffic schemes, where give excellent visibility and increase safety.

Surface Mounting



Rebound Signmaster Surface Mounting

Choice of fixings



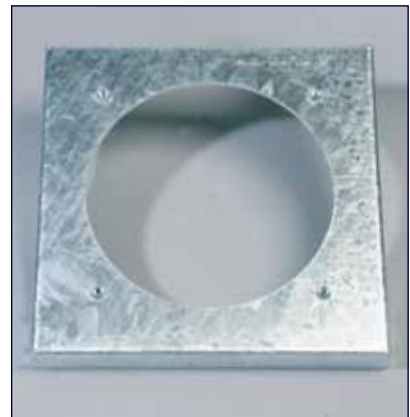
Bolt-down fixing.



Bolt-down fixing with adjustable depth concrete-in anchors.



Bolt-down fixing with concrete-in anchors.



Adapter plate for redundant light boxes.

Model Specs available on request

Wide Range of Fixings

Outstanding Rebound Performance



Black Rebound Signmaster, Non-Illuminated, Surface Mounted Bollard.



Black Rebound Signmaster, Non-Illuminated, Surface Mounted Bollard.

Rebound Signmaster Sublite™

Sublite LED light box is ideal for locations where illumination is required. As it uses low power infra-red phototransistor to allow for illumination only during the hours of darkness, energy costs are significantly lower compared to traditional alternatives.

**10 Year
Warranted
LEDs**

Design Features

Resettable Fuse – Protects the circuit from over current and can be reset easily by disconnecting the power for 1 minute.

Phototransistor – Ensures the unit is only illuminated during the hours of darkness.

Sealed LED Housing – IP67 rated. Offers excellent water and dust protection.

Four Fixing Points – Ensures secure bollard installation.

Sealing Gasket – Prevents water/dirt ingress.

Concrete Shelves – Allows concrete to flow over the shelves offering anchorage.

Compared to traditional lamps, an average of 80% saving on electricity costs can be made by switching to Rebound Signmaster LED Lighting.



Rebound Signmaster Sublite with optional Ducting Chamber



Optional Extras

Ducting Chamber

The ducting chamber extension box allows 230V ac cable to be laid at the legal requirement depth. Offers full protection to the cables, and multiple boxes can be stacked on top of each other to add more depth if required.

Ducting Splitter

For applications where two ducts are required the Splitter enables both ducts to be connected to the underground box.

230V ac to 24V ac Transformer



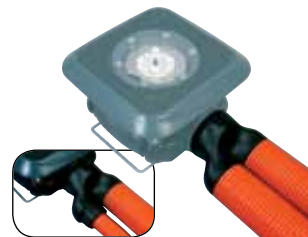
Phototransistor Cover Cap

For 24 hour illumination (regardless of external light levels).



Installation Lid

Prevents concrete getting inside the box and damaging the internal components or bollard fixing points.



LED Lighting Unit & Underground Box

consumption, and utilises an
s will be significantly reduced

PASSED
at 100 Km/h
(62mph)

MIRA Test – The
Sublite remained
illuminated after
drive through.

Passively
Safe to
BS EN 12767
100
NE4

Telemetry - Compatible
with some makes of
monitoring equipment.

**50/100mm
Ducting
Connector** –
To prevent exposed
wires ducting can be
connected up to the
unit.



**Model Specs
available on
request**

**Zinc Coated Mild
Steel Concrete-in
Bars** – Provides
anchorage into the
ground offering excellent
drive through
performance.



Sealing Gasket –
Prevents water ingress.

IP68 Rated Glands – Prevents
water entering the unit and damaging
the internal components. Can be
sited at the rear or underneath the
light box (please specify at point of
order).

Spacious Internal Area –
Able to house almost any brand of cut-
out and a transformer if required.

Mounting Boards – Can be
specified in two positions.

Compatible with Telemetry Equipment

Can be used with a
variety of remote
monitoring
systems.
Please contact our
Sales Office for
more information.



LED Lighting

230V ac
Total ON power use is 5 Watts.
STANDBY power use is 0.33 Watts.
UMSUG Code ON is 40 0005 0012 100
UMSUG Code STANDBY is 96 0001 0003 100
Power factor 0.91

24V ac Extra Low Voltage
(24V ac Transformer is IP68 rated and will run up to 3 Bollards)
Total ON power use is 6.5 Watts.
STANDBY power use is 1.5 Watts.
UMSUG Code ON is 40 0005 0000 100
UMSUG Code STANDBY is 96 0002 0000 100
Power factor 0.48

Rebound Signmaster™ Bollard

LED 24V Flush Installation Kit

The LED 24V installation kit is designed without a light box for quick installation, it can accommodate 50mm or 100mm ducting to suit your requirements. Low running costs because of the 6.5W power consumption can add up to large savings.

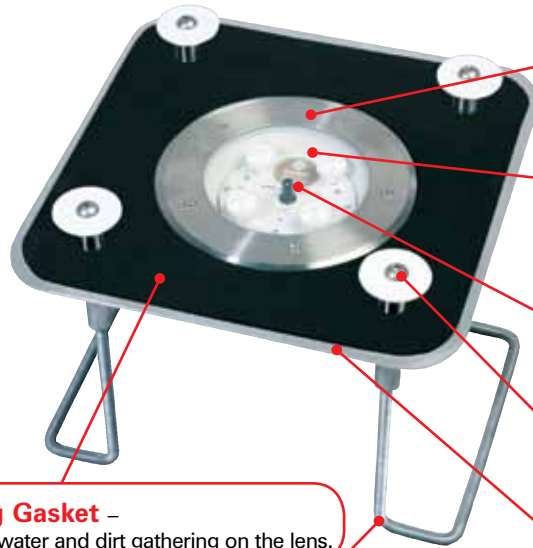
Passively Safe to BS EN 12767
100 NE4

10 Year Warranted LEDs

Design Features



Rebound Signmaster 24V Installation Kit with optional 100mm Bend



Stainless Steel – Will not rust or corrode.

IP67 Rated LED Housing – Offers excellent water and dust protection.

Phototransistor – Ensures the unit is only illuminated during the hours of darkness.

Four Fixing Points – Ensures secure bollard installation.

Aluminium Plate – Helps reduce corrosion.

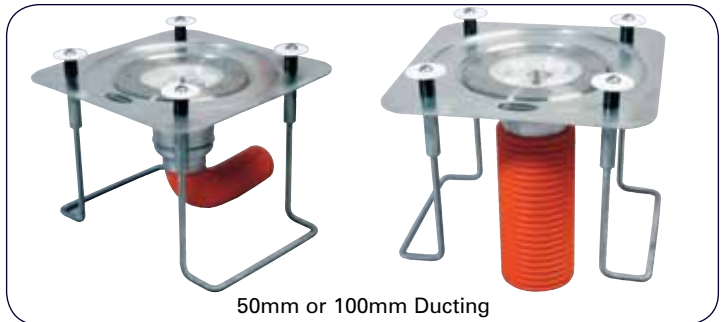
Sealing Gasket – Prevents water and dirt gathering on the lens.

Zinc Coated Mild Steel Concrete-in Bars – Provides anchorage into the ground offering excellent drive through performance.

Compared to traditional lamps, an average of 80% saving on electricity costs can be made by switching to Rebound Signmaster LED Lighting.

PASSED
at 100 Km/h
(62mph)

TRL Test – The LED 24V Flush Installation kit remained illuminated after drive through.



50mm or 100mm Ducting

Optional Extras

Phototransistor Cover Cap

For 24 hour illumination (regardless of external light levels).

100mm Bend

Installation Lid

Protects the unit and fixing points during installation.

230V ac to 24V ac Transformer

LED Lighting

24V ac Extra Low Voltage

(24V ac Transformer is IP68 rated and will run up to 3 Bollards)

Total ON power use is 6.5 Watts.

STANDBY power use is 1.5 Watts.

UMSUG Code ON is 40 0005 0000 100

UMSUG Code STANDBY is 96 0002 0000 100

Power factor 0.48

Rebound Signmaster™ Bollard

LED Gear Tray & Conversion Kit

Upgrade to LED illumination and a Rebound Signmaster Bollard, utilising your existing light boxes, using an LED Gear Tray and Conversion Kit.

Alternatively, for the most cost effective option, simply upgrade your existing light box and bollard to LEDs, using an LED Gear Tray.

**10 Year
Warranted
LEDs**

Design Features



Rebound Signmaster LED Gear Tray and Conversion Kit



IP67 Rated – To offer an additional level of protection against water or dirt ingress.



Resettable Fuse –

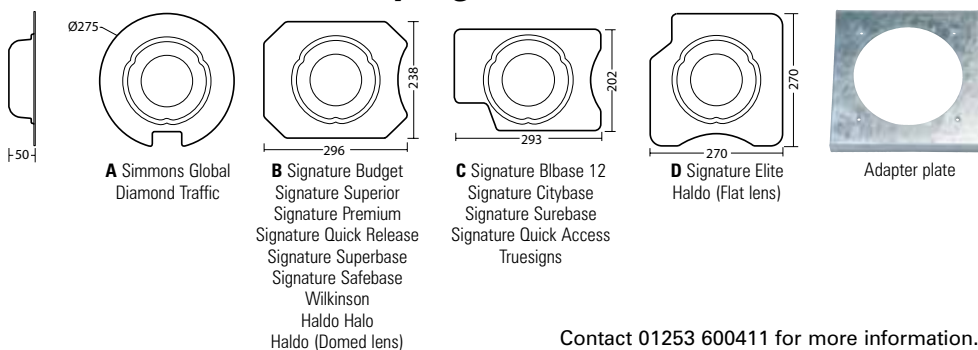
To protect the circuit from over current and can be reset easily by disconnecting the power for 1 minute.

Dual Layer Aluminium Heatsink –

To maintain low LED junction and board temperature.

Four Standard Gear Tray Conversion Kits Available – Most leading industry light boxes can be converted to Signmaster LED.

Four Standard Gear Tray Light Box Conversions Available



Compatible with Telemetry Equipment

The 230V model can be used with a variety of remote monitoring systems. Please contact our Sales Office for more information.



LED Lighting

230V ac

Total ON power use is 5 Watts.
STANDBY power use is 0.33 Watts.
UMSUG Code ON is 40 0005 0012 100
UMSUG Code STANDBY is 96 0001 0003 100
Power factor 0.91

24V ac Extra Low Voltage

(24V ac Transformer is IP68 rated and will run up to 3 Bollards)
Total ON power use is 6.5 Watts.
STANDBY power use is 1.5 Watts.
UMSUG Code ON is 40 0005 0000 100
UMSUG Code STANDBY is 96 0002 0000 100
Power factor 0.48

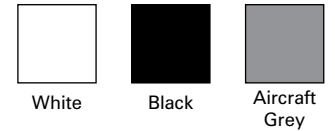
Rebound Signmaster™ Bollard

Specifications

Dimensions

	Bolt-down	Socketed
Overall Height	1046mm	1074mm
Max. Bollard Width	398mm	398mm
Max. Bollard Depth	200mm	152mm
Bolt-down Foot Detail	328 x 328mm	-
Fixing Centres	228 x 228mm	-
Socket Width	-	209mm
Socket Length	-	237mm
Socket Depth	-	306mm
Sign Face	300mm diameter	300mm diameter
Front/Rear Patch True Visibility Area	165,183mm ²	151,475mm ²
Side Patch Area	26,820mm ² per patch	20,784mm ² per patch
Total Side Patch Area	53,640mm ²	41,568mm ²
Weight of Bollard	6kg	6.9kg

Colours



(LED Illuminated Rebound Signmaster available in white only.)

(Socketed Rebound Signmaster available in White and Black only.)

Retroreflective Patch Options



1 x Fluorescent Yellow retroreflective front panel.
2 x Fluorescent Yellow retroreflective side panels.
1 x 300mm Signface.



1 x Fluorescent Yellow retroreflective front panel.
4 x Fluorescent Yellow retroreflective side panels.
1 x 300mm Signface.



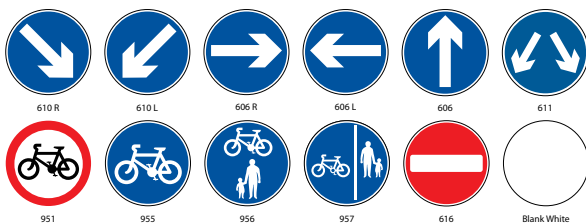
1 x Fluorescent Yellow retroreflective front panel.
1 x Fluorescent Yellow retroreflective back panel.
4 x Fluorescent Yellow retroreflective side panels.
1 x 300mm Signface.



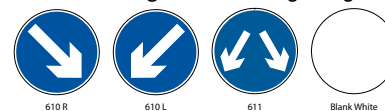
1 x Fluorescent Yellow retroreflective front panel.
1 x Fluorescent Yellow retroreflective back panel.
4 x Fluorescent Yellow retroreflective side panels.
2 x 300mm Signfaces.

Sign Options

Rebound Signmaster has the option to carry one or two signs.
Rebound Signmaster LED Legal Sign Options (for use on highways)



Rebound Signmaster Legal Sign Options (for use on highways)



Other Sign Options are available on request.
Please contact our sales office for further information.

Materials

Bollard: Impactapol® material
Socket: Durapol® material
Fixings: Stainless Steel
Sublite: Underground Box, Ducting Chamber and Splitter:
100% Recycled Durapol material.

LED Lighting Unit: Durapol
Concrete-in Bars: Mild Steel BZP
Installation Lid: 100% Recycled ABS
Retroreflective Sign/Patches: Avery Dennison Fluorescent
Yellow and Translucent White

Sublite Lumino™ LED Uplighter

**10 Year
Warranted
LEDs**

Design Features

Flush Ground Uplighter – removes the potential impact hazard created by a traditional post-mounted downlighter.

11w Power Consumption – Low energy and low maintenance.

Phototransistor – Ensures the unit is only illuminated during the hours of darkness.

Hinged LED Plate – allows adjustment after installation.

Highly Resilient – 100% recycled Durapol® material IP67 rated.

Sealed LED Housing – IP67 rated offers excellent water and dust protection.

Concrete Shelves – allows concrete to flow over the shelves offering anchorage.

**Model Specs
available on
request**

Versatile Configuration – Multiple ducting options and optional extension chambers can be used to adapt the Sublite Lumino to meet your requirements.



Compatible with Telemetry Equipment

Can be used with a variety of remote monitoring systems.

Please contact our Sales Office for more information.



Optional Extras

Installation Lid

Ducting Splitter

Ducting Chamber

Phototransistor Cover Cap

Overgrowth Restricting Surround



Sublite Lumino can be used with a variety of remote monitoring systems.

LED Lighting

Total ON power use is 11 Watts.

Total STANDBY power use/photocell is 0.66 Watts.

UMSUG Code ON is 40 0011 0002 100

UMSUG Code STANDBY is 96 0001 0004 100

Power factor 0.91

Specifications

Sublite Lumino Underground Box:

Length: 335mm

Width: 300mm

Depth below ground: 224mm

Sublite Lumino Uplighter:

Length: 445mm

Width: 445mm

Max. height above ground: 90mm

Materials

Underground Box, Ducting Chamber, Splitter: 100% Recycled Durapol

Installation Lid, Surround: 100% Recycled ABS

LED Lighting Unit: Durapol

Concrete-in Bars: Mild Steel BZP

* Impactapol® material is a polymer specially developed with enhanced flexibility and extensibility properties offering good recovery performance after vehicular impact. Impactapol has good abrasion resistance and the material will not chip or rust and never needs painting.

** Durapol® material is a polymer formulated to withstand extremes of temperature and is impact-tested in our Quality Assurance Laboratory as part of our BS EN ISO 9001:2008 test procedure. Durapol will not chip or rust, is easy to clean and never needs painting.

NEW

Lumino City™ 750 LED Downlight

Lumino City 750 is an energy efficient, low maintenance downlighter that illuminates signs up to 750mm. Two versions are available, a 230V model utilising a 3.6 Watt energy efficient LED and a 24V model utilising a 2.4 Watt energy efficient LED.

Lumino City 750 conforms to the highest standards in energy efficient and effective illumination without compromising on style. Manufactured to absorb an accidental vehicle impact, Lumino City 750 is unique to the marketplace.

Design Features

Smooth Finish – Easy to clean.

Flexpoint –

Will withstand side swipes, reducing maintenance and replacement costs.

High Grade Aluminium –

The bracket is manufactured from durable and robust Chromadex coated aluminium.

Impact Absorbent Impactapol® Material Flexible Housing – Weather resistant, durable and robust.

Energy efficient LED – reduces carbon footprint and energy costs.

Mains Driven – No driver to fail providing excellent reliability.

Warranty on LED – Unit carries a 10 year warranty on LEDs, which have a 50,000 hour minimum expected life, which should be comfortably exceeded.

IP66 Rating – Long product life and reduced maintenance.

10 Year Warranted LEDs

Modern Design – Purpose built for LEDs, with an aesthetically pleasing shape.

Range of Mounting Options –

Brackets available to fit a variety of post diameters, top or mid point of post and single or double sided. See p14.

Substantial Aluminium Heatsink – Keeps LEDs cool for increased longevity.

Optional Photocell – Ensures the unit is only illuminated during the hours of darkness. (See page 15 for more information.)

Colour Options – Black or Aircraft Grey.

Fixing Options – A variety of fixing options are available.



*Impactapol® material is a polymer specially developed with enhanced flexibility and extensibility properties offering good recovery performance after vehicular impact. Impactapol® has good abrasion resistance and the material will not chip or rust and never needs painting.

nligher

Can Absorb Vehicle Sideswipe



Impactapol® material housing will flex if impacted by a vehicle and return to its normal position afterwards.

State of the Art Optic

Distributes light evenly across the sign (up to 750mm diameter) for excellent visibility and improved safety. Complies with BS EN12899-1 uniformity luminance – Class UE2 (230V ac model) or UE3 (24V ac model).

Extensive testing has been carried out to find the optimum illuminance level to ensure optimum light output across the surface of the sign ensuring it is clearly illuminated without creating glare. Conforms to BS EN 12899-1 mean illuminance Class E2.

Standard Downlighter



NEW Lumino City™ 750 Downlighter



LED Lighting

230V ac model
Total power use is 3.6W
UMSUG Code 40 0003 0008 100
Power Factor 0.91

24V ac model
Total power use is 2.4W
UMSUG Code 40 0002 0002 100
Power Factor 0.82

Model Specs available on request

230V Model Compatible with Telemetry Equipment

A moulded-in cradle makes Lumino City 750 suitable for the use of remote monitoring devices. The device and aerial are fully enclosed inside the housing to ensure there are no protruding components, reducing the risk of vandalism.

Remote Monitoring Device



Optional 230V ac to 24V ac Transformer



NEW Lumino City™ 750 LED Downlighter

Mounting Options

1 Single Top and Mid Post Fixing Kit



Single Sided Closed Top
- 76mm or 89mm posts.

OR



Single Sided Open Top
- 76mm or 89mm posts.
- Without the cap for mounting the light part way down the post.

2 Double Top and Mid Post Fixing Kit



Double Sided Closed Top –
For mounting two sign lights back-to-back.
- 76mm or 89mm posts.
- Complete with cap for mounting the light onto the top of the post.

OR



Double Sided Open Top –
For mounting two sign lights back-to-back.
- 76mm or 89mm posts.
- Without cap for mounting the light part way down the post.

3 Universal Bracket for Post Fixing Kit



Universal Bracket –
For larger diameter posts (114mm, 140mm, 168mm), and lamp posts.

4 Universal Bracket for Wall Fixing Kit



Universal Bracket –
Wall mounting

Specifications

Weights

Single Unit: 2.5kg
Double Unit: 4.6kg
Universal Single Unit: 2.1kg
(all complete with relevant brackets)

Materials

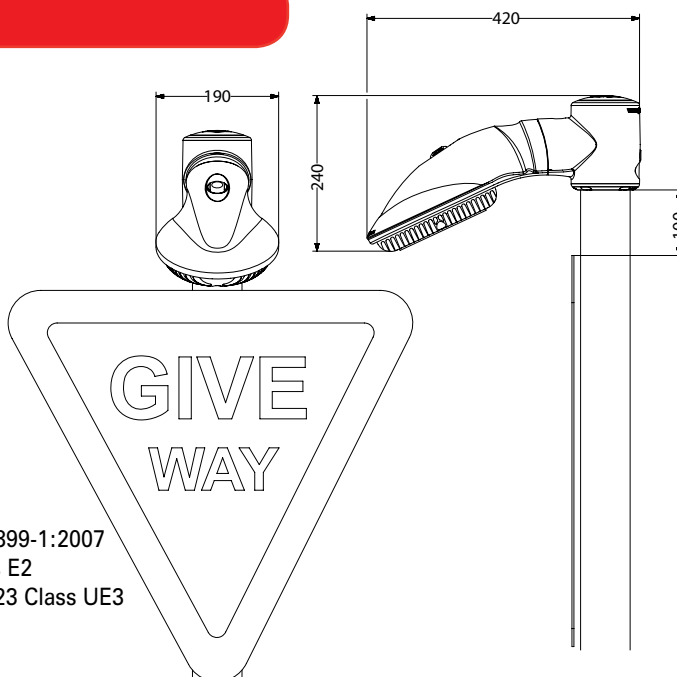
Signlight Arm: Impactapol® material
Brackets and Heatsink: High Grade Aluminium
Cap and Conversion Collar: Impactapol
All Fixings: Stainless Steel

Colours

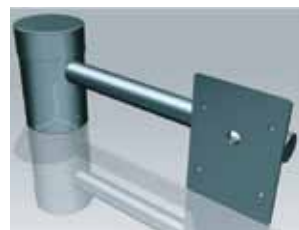
Aircraft Grey, Black.

Conformity

Lumino City 750 conforms to BS EN 12899-1:2007
7.4.1.2 Mean Illuminance Table 22 Class E2
7.4.1.3 Uniformity of Illuminance Table 23 Class UE3



5 Offset Bracket



Offset Bracket –
For illuminating offset signs.
- 76mm posts only

*Impactapol® material is a polymer specially developed with enhanced flexibility and extensibility properties offering good recovery performance after vehicular impact. Impactapol® has good abrasion resistance and the material will not chip or rust and never needs painting.

Ecolumino™ Range Downlighter Gear Tray

**New Ecolumino 1500
available**

AVAILABLE IN TWO MODELS:

Ecolumino 750

To illuminate signs up to 750mm

Ecolumino 1500

To illuminate signs up to 1500mm

**10 Year
Warranted
LEDs**

Design Features

**RETROFIT LED GEAR TRAY FOR THE
CONVERSION OF EXISTING SIGN LIGHTS**

**Ecolumino 750 – 3W Power Consumption
Ecolumino 1500 – 4.2W Power
Consumption**

Complies with BS EN 12899-1 on Luminance Levels.

10 year Warranty on LEDs – 50,000 hour minimum expected life, which should be comfortably exceeded.

State of the Art Optics – distribute light evenly over the sign, to fully comply with regulations.

Ecolumino 750



Ecolumino 1500



**Ecolumino 750 – Three Standard
Downlighter Gear Trays Available**

Type 1

To fit Signature Exlite LA/Forest City
2.8 Watts (+0.25W Zodion Photocell)
UMSUG Code 40 0003 0006 100
Power Factor 0.41

Type 3

To fit Simmonsigns LUA
2.8 Watts (+0.25W Zodion Photocell)
UMSUG Code 40 0003 0006 100
Power Factor 0.41

Type 2

To fit Signature Delta
2.8 Watts (+0.25W Zodion Photocell)
UMSUG Code 40 0003 0006 100
Power Factor 0.41

**Ecolumino 1500 – Two Standard
Downlighter Gear Trays Available**

Type 1

To fit Signature Majorlite T8 (L8) Type B
4.2 Watts (+0.25W Zodion Photocell)
UMSUG Code 40 0004 0010 100
Power Factor 0.53

Type 2

To fit Signature Majorlite LD3 Type D
4.2 Watts (+0.25W Zodion Photocell)
UMSUG Code 40 0004 0010 100
Power Factor 0.53

Optional Extras

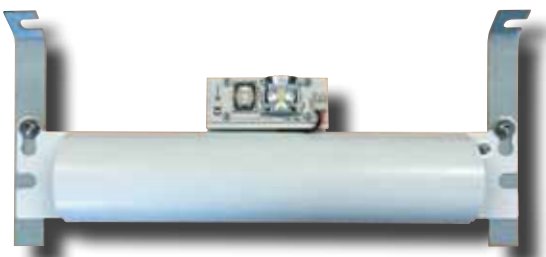
Photocell 0.25W – UMSUG Code 94 0001 1000 100

For Ecolumino 750
Ecolumino 1500 and
Lumino City 750.

Ensures the unit is only active during the hours of darkness.



Signature Titan sign light conversion fixing kit for Ecolumino 750 Type 1.



Complies with BS EN 12899-1

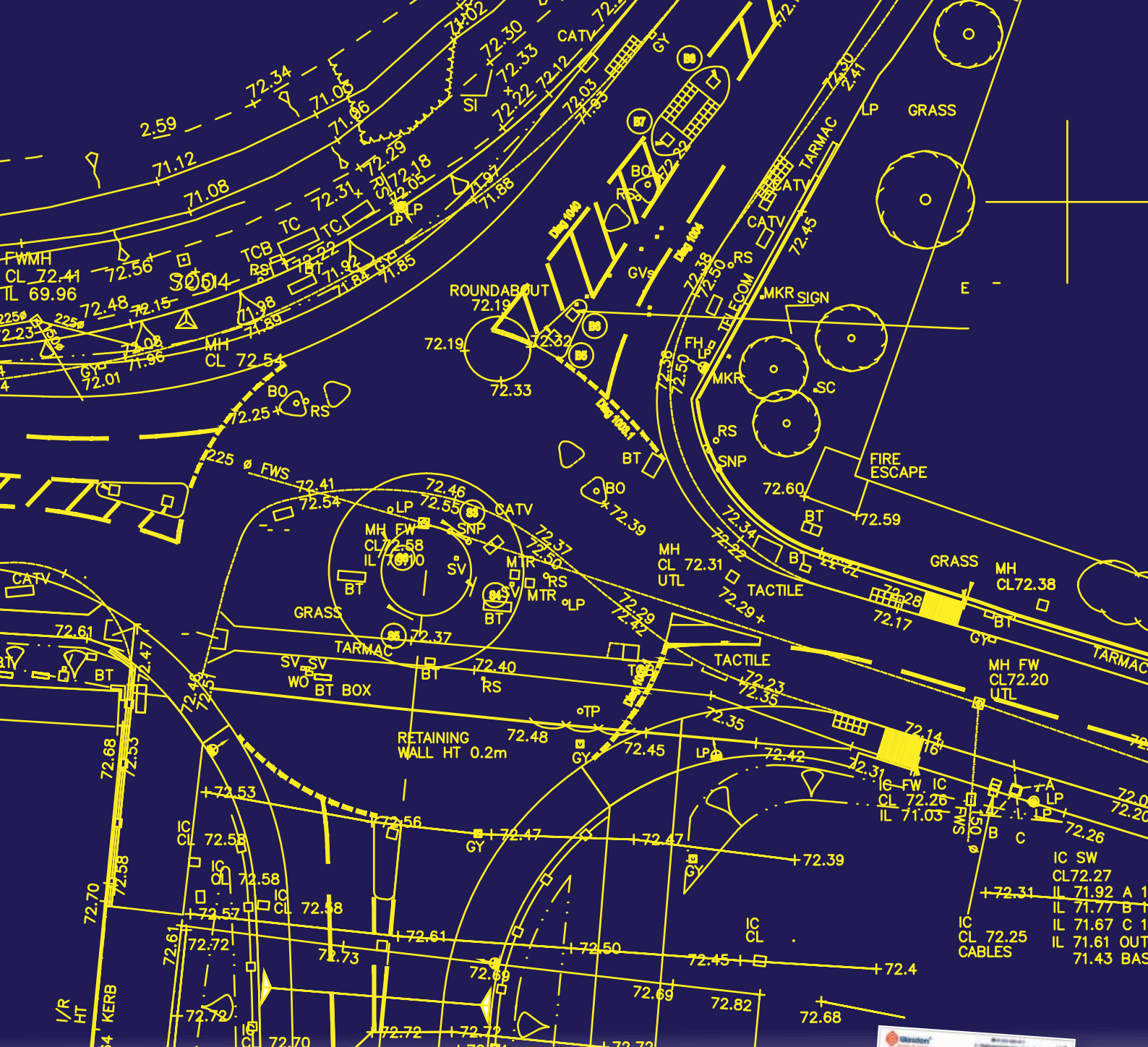
Ecolumino will externally illuminate a sign to a mean luminance level between 100-400 LUX, as described in Table 22, Class E2. The uniformity of illuminance will meet Class UE3 of Table 23 (Ecolumino 750) or Class UE2 of Table 23 (Ecolumino 1500).

Standard Downlighter Gear Tray



Ecolumino Downlighter Gear Tray





www.safety4highways.com

Visit our new website to see our full range of Passively Safe products, including Bollards, Hazard & Verge Markers and our Advanced Chevroflex™ Flexible Sign System. Downloadable product literature, case studies and video clips are also available.

Individual model specification sheets are available on most Glasdon Bollards and Traffic Safety Products. Please phone 01253 600411 for details.



FREE DELIVERY IN MAINLAND UK & NORTHERN IRELAND

Our national distribution network ensures prompt delivery in mainland UK and Northern Ireland. All our prices are carriage-free on the mainland and Northern Ireland for orders over £50 value, only VAT will be added.

However, to help offset the cost of packing, administration and delivery, there is a small charge of £5 on orders below the value of £50.

Glasdon®, Chevroflex Ultra, Durapol, Ecolumino, Impactapol, Lumino City, Rebound Signmaster, Signmaster Sublite and Sublite Lumino are trademarks or registered trademarks of GLASDON GROUP or its subsidiaries in the UK and other countries.

Glasdon Group Limited Is An Equal Opportunities Employer.

© Glasdon UK Ltd. 11/2014. Glasdon reserve the right to alter price and specification without prior notice. PN/MPS



Glasdon

Glasdon U.K. Limited
Local Government
Highways Lighting Division

Preston New Road
BLACKPOOL
Lancashire
FY4 4UL

Tel: (01253) 600411
Fax: (01253) 792558
e-mail: hs@glasdon-uk.co.uk
web: www.glasdon.com



GS805/02